

FACT SHEET



Location

- Located in the heart of the city centre on the historic Royal Mile, halfway between Edinburgh Castle and Holyrood Palace.
- Within walking distance of the principal shopping district where you will find Harvey Nichols, Jenners, Louis Vuitton, Emporio Armani and Calvin Klein.
- A 5 minute Taxi ride to the Edinburgh International Conference Centre.
- Edinburgh International Airport is 11.5km from the hotel.
- Waverley Railway Station is only 200m from the hotel and both East and West Coast mainlines service this Station.

Rooms

- 238 newly refurbished guest rooms including business class rooms and suites.
- In-room amenities include free broadband access, direct dial telephones, satellite TV, pay movies, hairdryer, tea/coffee making facilities, mini bar and laptop safe.
- Flexible bed stock of Twin/King, Zip & Link.
- Dry Cleaning and Laundry Service available.
- All rooms are air-conditioned.

Food & Beverage

- Itchycoo bar & kitchen is a 70 seat venue, that offers fresh flavours from the area, combined in a way to please the modern palate.
- The hotel also offers Super Breakfast Buffet & Grab and Run.

Health & Rejuvenation

- Our Evolve Health & Leisure club offers a gymnasium and 10 metre pool.
- Enjoy the heat of our Ladies and Gents Saunas.
- Also choose from one of our Wellness Treatments, which include aromatherapy massage, a luxury facial or a reiki massage.

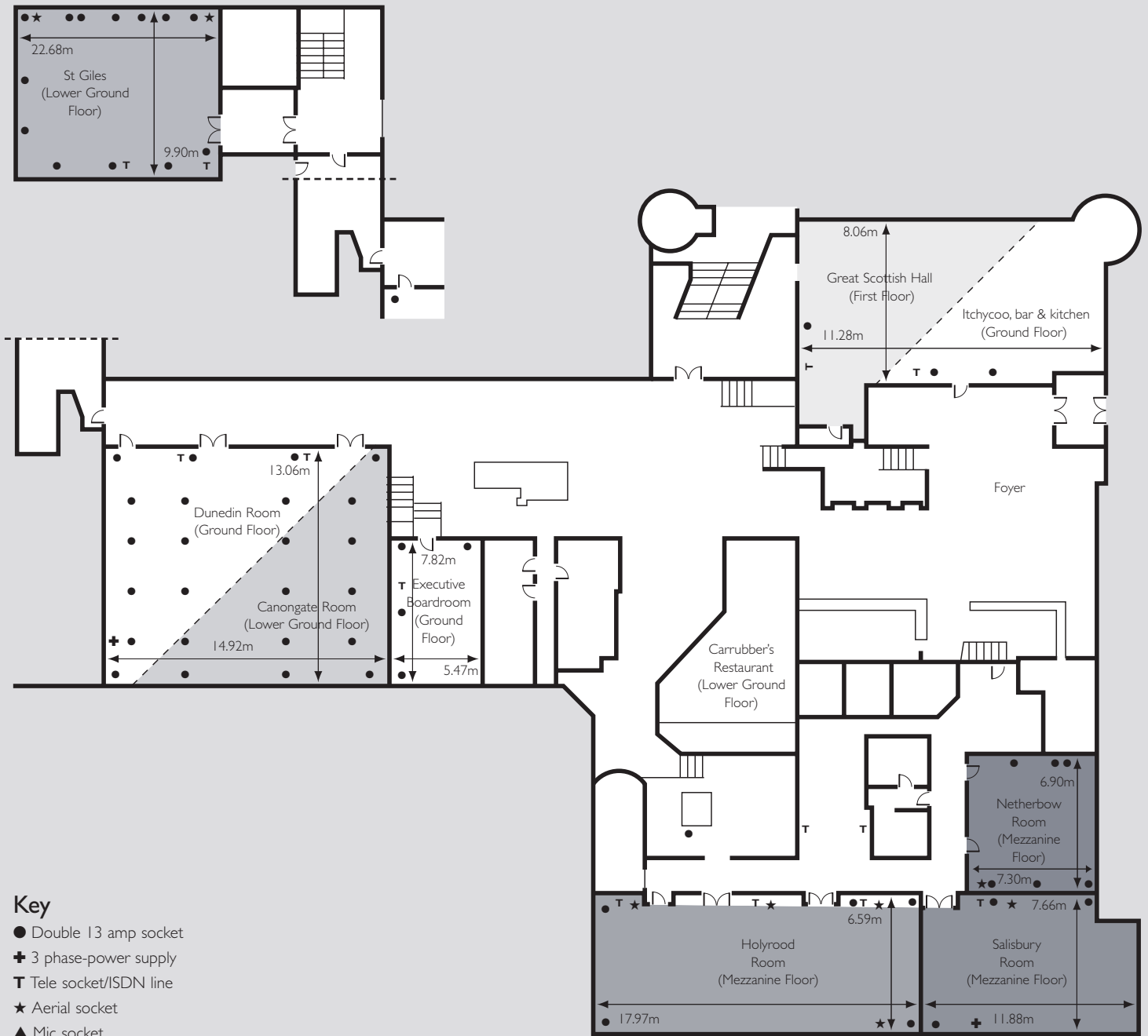
Meetings

- 8 dedicated meetings and events rooms.
- Meeting space for 2 - 900 delegates.
- All rooms provide natural daylight.
- Induction loop and free broadband available.
- Dedicated meeting co-ordinator.
- Largest room is 224 m².
- 131 Car Parking Spaces.

Radisson SAS Hotel

80 High Street, The Royal Mile, Edinburgh EH1 1TH, Scotland
Tel: +44 (0)131 557 9797, Fax: +44 (0)131 557 9789
sales.edinburgh@radissonsas.com
edinburgh.radissonsas.com

Conference & Meeting Facilities



Key

- Double 13 amp socket
- ⊕ 3 phase-power supply
- T Tele socket/ISDN line
- ★ Aerial socket
- ▲ Mic socket

	Boardroom	Clubroom	Classroom	Open square seating	Theatre style	U-Shape	Dinner/ Dinner Dance	Reception	Ceiling height	Length and width	Floor area m ²	Door height	Door width	Power points	Lighting	Natural daylight	Telephone
Dunedin Room	40	80	120	50	180	45	120/100	200	3.24	14.92 x 13.06	194	2.03	1.50	✓	✓	✓	✓
Canongate Room	40	80	120	50	180	45	140/120	200	3.24	20.85 x 11.91	220	2.03	1.50	✓	✓	✓	✓
St Giles	46	60	100	36	180	40	180/150	250	3.10	22.68 x 9.90	224	2.03	1.50	✓	✓	✓	✓
Holyrood	38	50	70	42	100	36	-/-	-	2.40	17.97 x 6.59	125	2.03	1.50	✓	✓	✓	✓
Salisbury Room	20	-	30	28	60	22	-/-	-	2.40	11.88 x 7.66	81	2.03	0.79	✓	✓	✓	✓
Netherbow Room	14	-	18	20	30	14	-/-	-	2.40	6.90 x 7.30	50	2.03	0.79	✓	✓	✓	✓
Executive Boardroom	16	-	10	16	20	10	18/-	30	2.45	7.82 x 5.47	42	2.03	0.79	✓	✓	✓	✓
Great Scottish Hall	30	-	32	32	80	26	60/-	100	3.10	11.28 x 8.06	116	2.03	0.89	✓	✓	✓	✓